



Headstone History Detectives - April 5th 2020

Shadow Puppet activity!

Artist-led family fun at home Master puppet maker Joni-Rae Carrack has kindly created an instruction sheet for you to create a Victorian Shadow Puppet at home!

Put on a puppet show, and don't forget to share your creations!

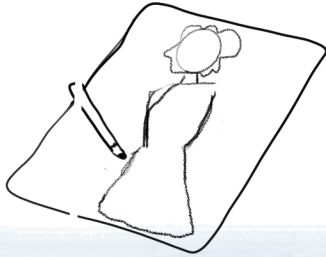
[#HeadstoneAtHome](#) [#MuseumsAtHome](#)



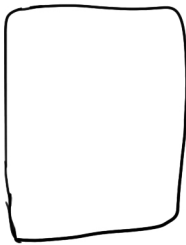
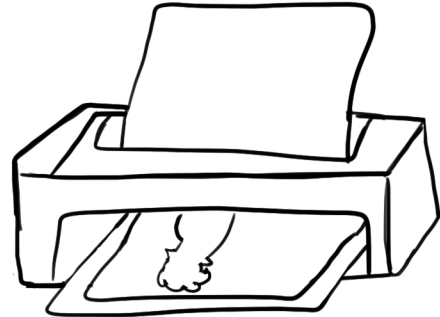
Victorian Shadow Puppets

1. Sketch / Design

...Or Print the template!



Doodle your shadow puppet character.
It doesn't have to be perfect straight away!
Use the internet if you need help (Search for silhouettes).
It's best if your character is facing side ways.



If you want one part of your puppet to move (also know as 'articulation'), you will need to draw those separately. Your puppet could move their heads, arm or legs!



Don't make your arms/ legs too thin! Make sure you leave enough room for the split pin!

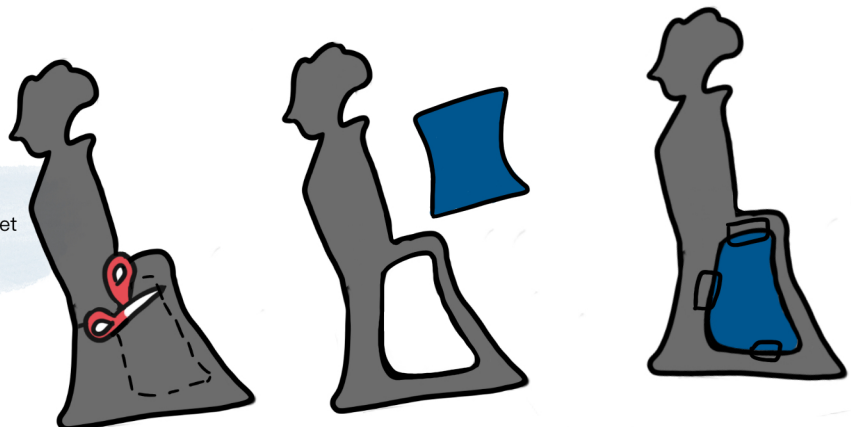
2. Trace and Cut!

You'll need a piece of card, any colour will do but most puppeteers use black! You could even use a cereal box for extra tough puppets!
Either trace your design or stick it onto your card using tape, then cut it out!



3. Add colour

You can add colour to a shadow puppet by cutting out a small section in the middle of your puppet. You can use coloured cellophane, acetate or clear sweetie wrappers (anything you can see through!).
Cut into the right size and shape and tape onto your puppet



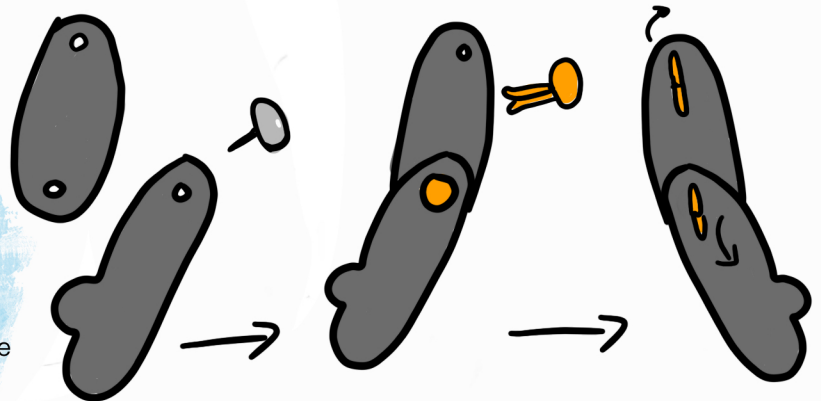
Created by Joni-Rae Carrack

Victorian Shadow Puppets

4. Assemble

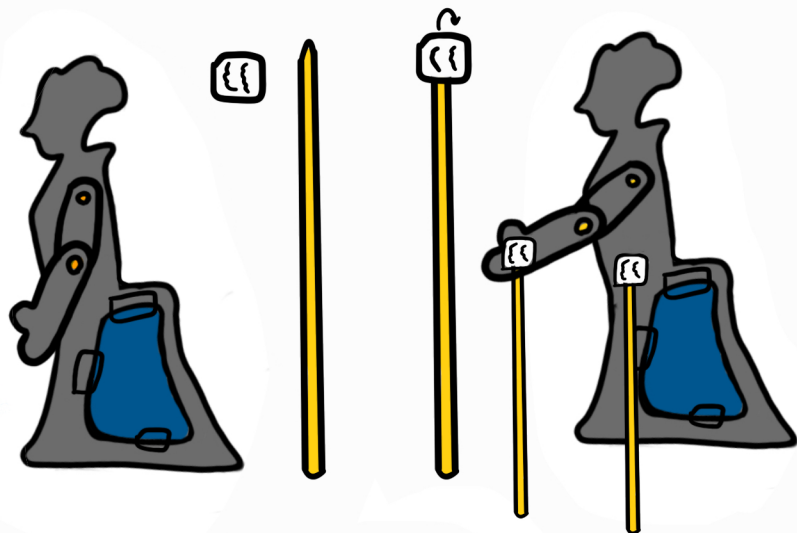
To connect all the pieces of the puppet together, make a small hole with a drawing pin (ask a grown-up for help!) into the puppet's joints and into the body of the puppet.

This will help you to push the split pins through the card. Split the two legs of the split pin to secure the pieces together.



To hold and move your puppet, they will need a rod! You can use a bamboo skewer.

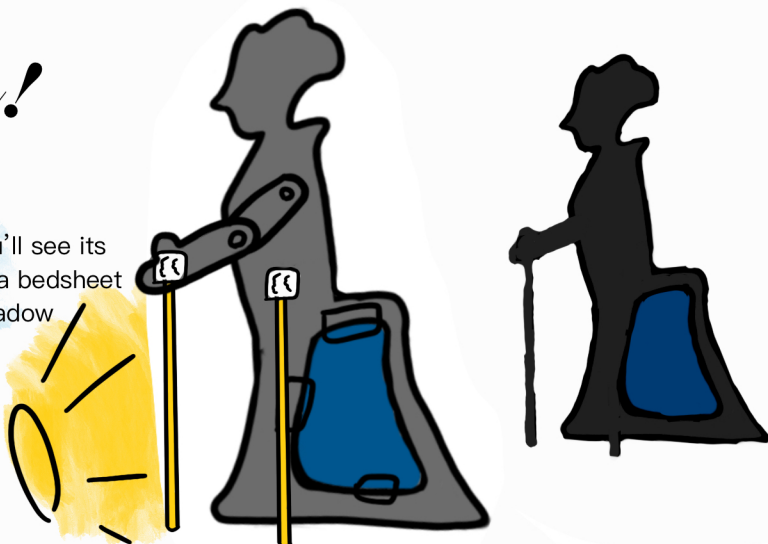
Stick the fuzzy side of a piece of Velcro to the tip of the bamboo skewer and the scratchy end to your puppet.



5. Perform!

You'll need a dark room and a strong torch.

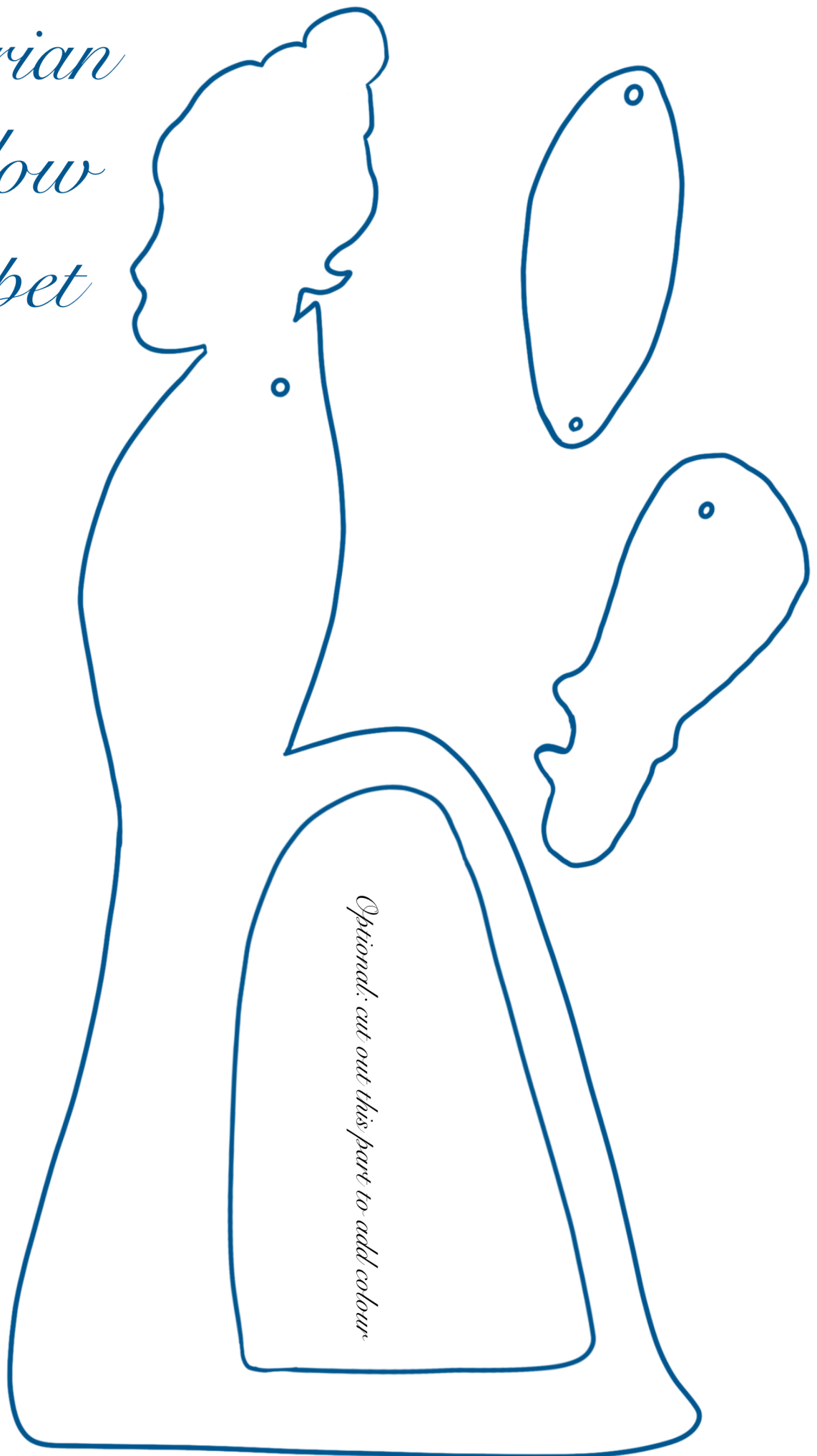
Put your puppet in front of the torch and you'll see its shadow cast on the wall. Or you could hang a bedsheet between two chairs or a table to make a shadow puppet screen!



Have fun creating your own stories and designing even more characters!

Created by Joni-Rae Carrack

Victorian Shadow Puppet



Created by Joni-Rae Carrack

